

GREATMETA

Create Your AI ESG Colleagues: The Future of RegTech



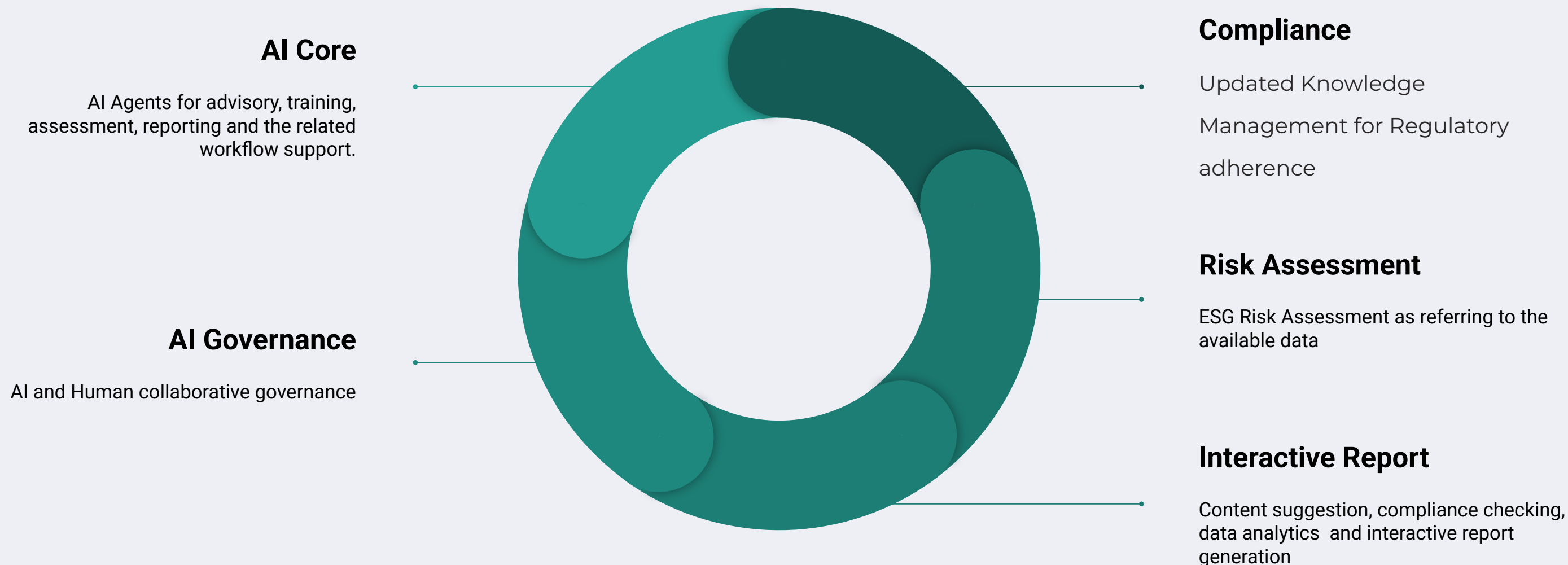
Create Your AI Colleagues: The Future of RegTech



CREATMETA

Beyond Software:

A Digital Workforce for the New Era of Regulation



We are not just a software company; we are pioneering a new category of RegTech. The AI Colleague System deploys a digital workforce to empower financial institutions and listed companies.

A New Era of Mandatory, Complex ESG Disclosures

The market is facing an urgent, non-negotiable compliance challenge driven by new regulations.

1 — Pre-2025

Voluntary Guidelines

- Optional reporting frameworks
- Limited enforcement
- Inconsistent standards

2 — 2025 Onwards

Mandatory Compliance

- Strict regulatory requirements
- Comprehensive disclosure obligations
- Standardized reporting formats



The Opaque Supply Chain: A Critical Risk for Listed Companies

The biggest compliance risk for listed companies lies outside their own walls.

Supply Chain Opacity

Limited visibility into supplier practices and compliance standards creates significant regulatory exposure.

Loan Portfolio Risks

ESG performance threatens financial stability and compliance.

Investment Blind Spots

Inadequate screening of investment targets leads to potential regulatory violations.



Chat Bots .. AI Report Agents



Bundled

3D Metaverse

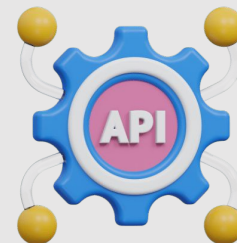
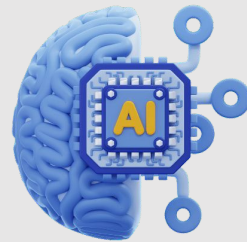
Robots



Use API (Optional)



Our AI Colleagues System



Use Case in Action: The AI ESG Colleague Team

To demonstrate the system's power, let's examine its premier implementation for ESG compliance.



ESG Expert

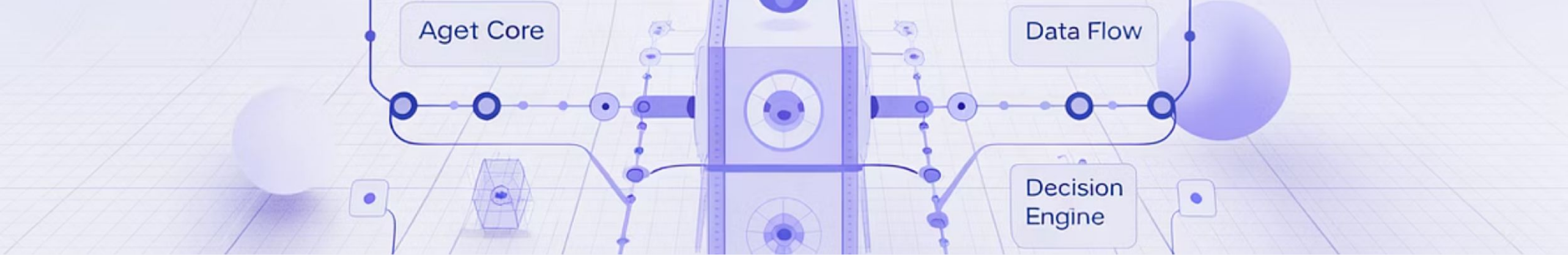
Provides domain expertise and regulatory guidance across all sustainability dimensions

ESG Trainer

Educates staff and improves organizational ESG literacy through personalized learning

ESG Reporter

Automates documentation and ensures compliance with evolving disclosure requirements



A Collaborative, Domain-Agnostic Agentic AI Framework

Our architecture is the solution. It's flexible, powerful, and designed for complex regulatory environments.



Knowledge and Data Ingestion

Secure collection from multiple
sources



AI Processing

Multi-agent analysis and
verification



Intelligent Output

Actionable insights and automated
reporting

GREAT  META



How We Ensure Accuracy and Orchestrate Complexity

This is the core technology that makes our system reliable and intelligent.

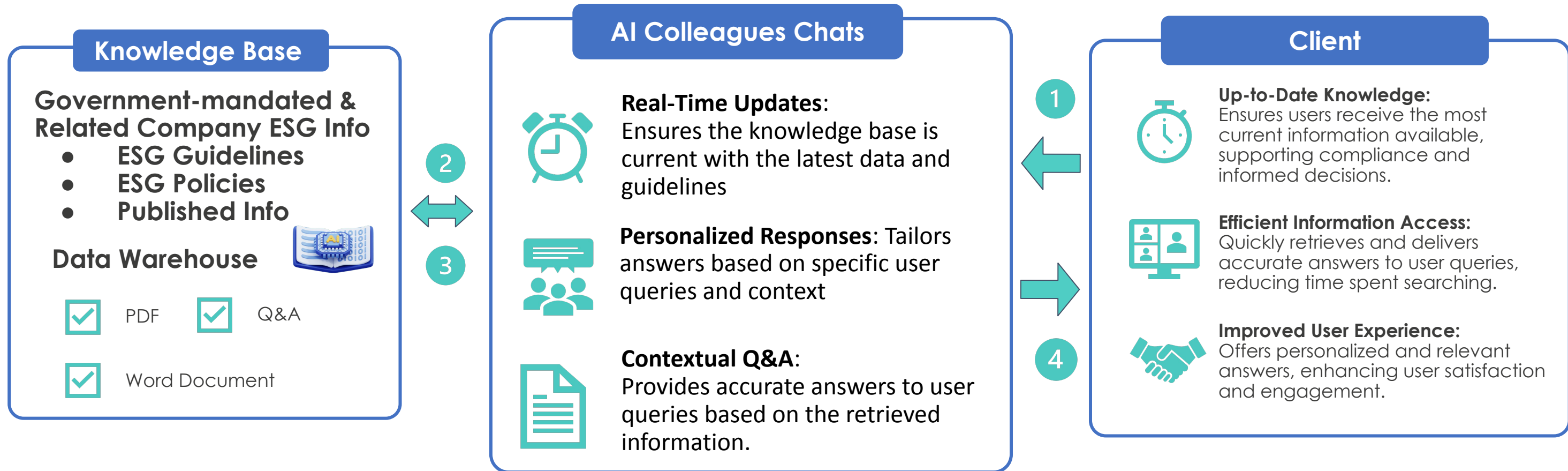
RAG Framework

- Retrieval-Augmented Generation
- Ensures factual accuracy
- Grounds responses in verified data
- Eliminates hallucinations

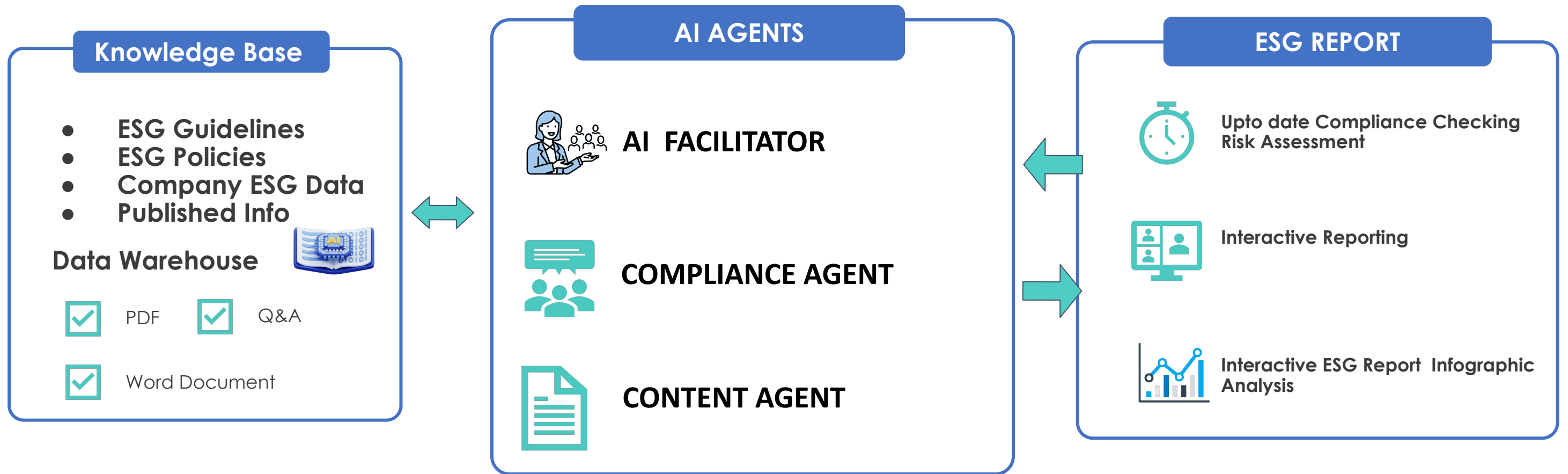
G-A-M-E Framework

- Goal-oriented Agent Management Engine
- Coordinates multiple AI agents
- Manages complex workflows
- Ensures coherent outputs

From Advisory, Training, Compliance Checking to "Living Report"



From Advisory, Training, Compliance Checking to "Living Report"



From Advisory, Training, Compliance Checking to "Living Report"

This is how our system works in practice for a listed company's ESG team.

Part 1: Advisory

AI ESG Expert to provide guidance for ESG governance, data gathering and compliance.

Part 2: Training

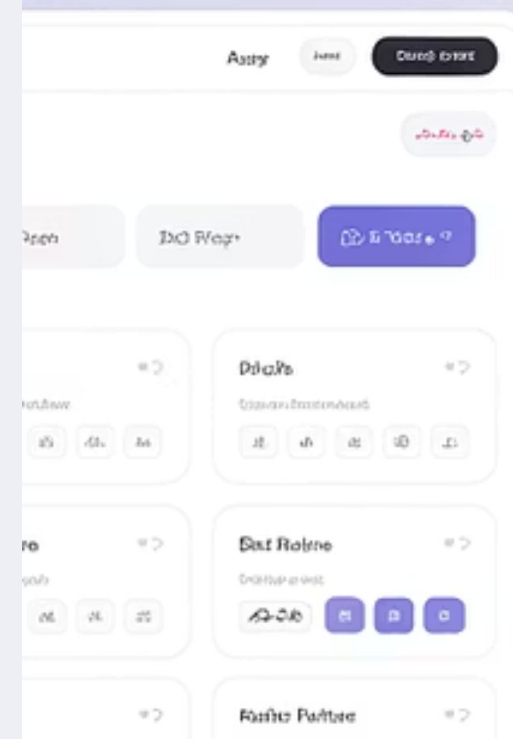
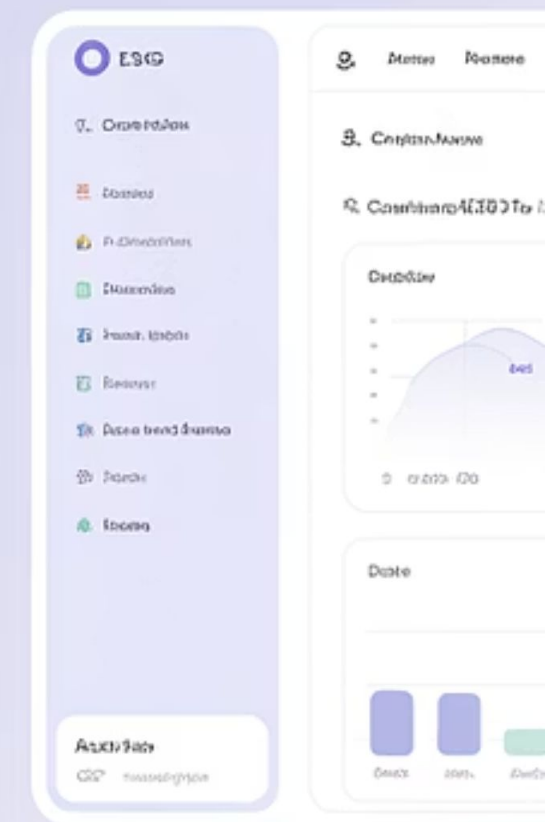
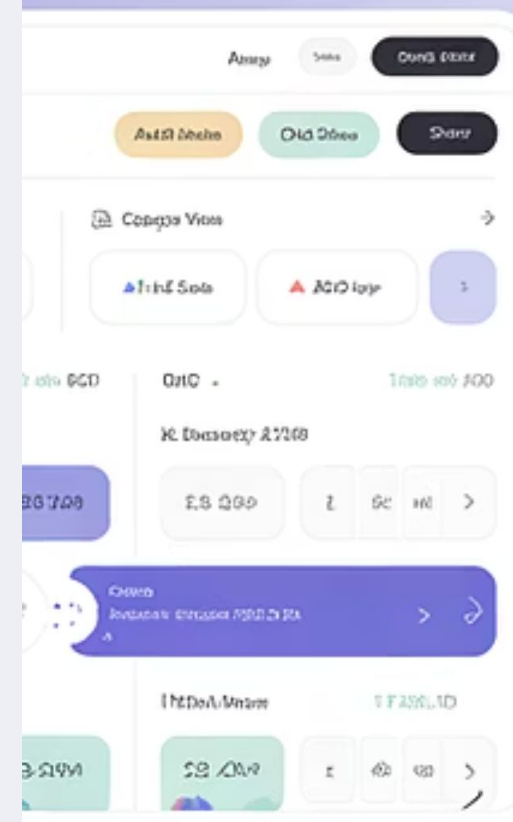
ESG training to equip human staff to be ready to collaborate with AI for fulfilling the ESG compliance.

Part 3: Compliance Checking

AI support for report drafting and compliance checking as referring to the available data

Part 4: Living Report

AI - Human collaborated content confirmation. Interactive report generation.





A Force Multiplier for the Professional Services Sector

Our platform is also a powerful tool for the consultants and advisors serving listed companies.

Enhanced Efficiency

Serve more clients with the same resources through AI-powered automation of routine tasks

Improved Accuracy

Reduce human error and ensure consistent quality across all client deliverables

Value-Added Services

Focus consultant time on strategic advice rather than data collection and processing



Establishing a New Category: The Compliance Capability Engine

We are not just another reporting tool; we are creating a new market category.

Traditional Approaches

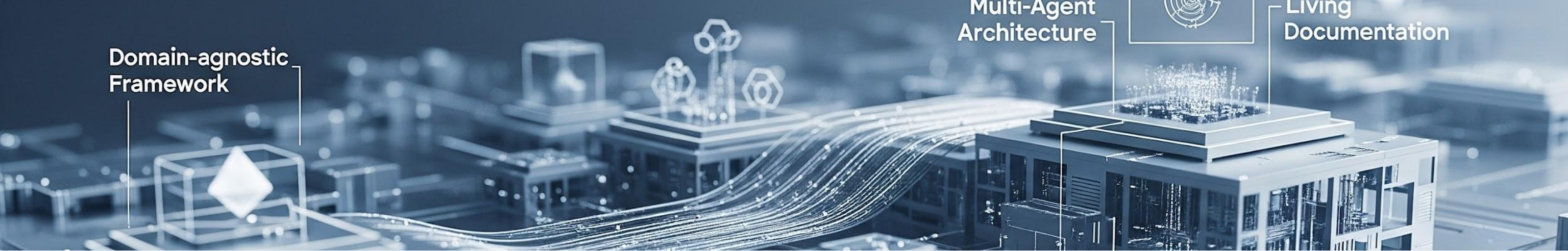
- Reporting Tools: High automation but limited capability
- Manual Consulting: High capability but limited automation

Our Advantage

The AI Colleague System combines the best of both worlds:

- High automation through advanced AI
- High capability through domain expertise

GREAT  META



Filling the Gap in the RegTech Landscape

Feature	AI Colleague System
Multi-agent architecture	✓
Domain-agnostic framework	✓
RAG implementation	✓
"Living" documentation	✓

Our comprehensive approach addresses gaps left by existing solutions, particularly in handling complex regulatory environments with multiple stakeholders.

Proven Traction in a High-Demand Market

We have market validation and are perfectly timed to meet regulatory demand.



85%

Market Readiness

Of surveyed financial institutions plan to increase RegTech investment in 2025

3X

Growth Projection

Expected market expansion for ESG compliance solutions by 2027

40%

Cost Reduction

Average compliance cost savings reported by early adopters

GREAT  META



G-A-M-E

Pioneering Agentic AI in the RegTech Domain

HKICTA Criterion - Innovation & Creativity (20%)

Our innovation is foundational and future-proof.

Novel Architecture

AI multi-agent system specifically designed for regulatory compliance challenges

Extensible Framework

Designed to incorporate future data sources and regulatory requirements

Collaborative Intelligence

Pioneering approach that combines human expertise with AI capabilities



Benefits & Impact

Reducing Risk, Enhancing Governance, and Strengthening the Ecosystem

Firm-Level Benefits

- Reduced compliance costs
- Improved risk management
- Enhanced reporting quality

Market-Level Impact

- Increased transparency
- Strengthened investor confidence
- Positioning Hong Kong as RegTech leader



Quality Through Technical Robustness and Responsible AI

HKICTA Criterion – Quality (10%)

Quality is embedded in our technology and our ethical framework.

Technical Robustness

- Rigorous testing protocols
- Continuous performance monitoring
- Redundant verification systems

Data Governance

- Comprehensive data security measures
- Privacy-by-design architecture
- Transparent data handling policies

Ethical Framework

- Human-in-the-loop oversight
- Bias detection and mitigation
- Explainable AI methodologies

Trust by Design: Our Ethical Framework

We don't just use AI; we use it responsibly.



Transparency

All AI decisions are traceable and explainable, with clear documentation of data sources and reasoning processes.

Our ethical framework is aligned with international standards including the EU AI Act and HKMA's principles for responsible AI.



Human-in-the-Loop

Critical decisions always include human oversight and approval, ensuring accountability and ethical judgment.

The Leadership Team: AI & ESG Domain Experts

Our team combines deep technical expertise with extensive domain knowledge to tackle complex RegTech challenges.

Dr. Kyle Wong - Founder

AI & Green Finance visionary with 15+ years pioneering sustainable technology solutions for financial institutions.



Dr. Amanda Lim - Founder

Solution architect specializing in ESG frameworks, data science integration, and system design for regulatory compliance.



Leonardo Liu - Business Manager

Certified ESG Professional (ESGCP) and Accounting and Finance professional with sustainability expertise, and business acumen, managing project execution to translate ESG challenges into successful project outcomes.



Tim Koo - CFO

Financial strategist with expertise in corporate compliance, risk management, and sustainable investment structures.

Kane Wu - AI Architect

Specialist in AI systems design with account & legal expertise, focusing on regulatory-compliant business analytics solutions.

Strategic Partnerships

Allied Environmental Consultants validates our compliance logic against complex ESG scenarios.



The Future of RegTech is Collaborative, Intelligent & Here

The AI Colleague System represents a fundamental shift in how organizations approach regulatory compliance:

- From reactive to proactive compliance
- From isolated tools to integrated capabilities
- From manual processes to intelligent automation

We're not just building software; we're creating digital colleagues that transform how organizations navigate the complex regulatory landscape.



GREATMETA



Contact Information: **info@greatmeta.io**

Website: **www.greatmeta.com**